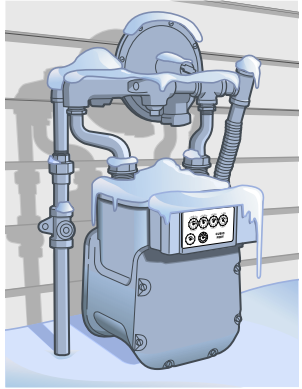


# PROTECT METERS FROM HARSH WINTER WEATHER

For your safety, Great Plains Natural Gas recommends regularly inspecting and clearing any ice or snow from your residential natural gas meter. This helps prevent damage and potential hazards.

## *Why is it important to keep a meter clear of snow and ice?*

- ▶ Accumulated snow could damage the meter and piping, causing gas to leak into your home, creating a hazardous situation.
- ▶ Excessive snow cover may result in abnormal pressure, affect appliance operation and interrupt your service.
- ▶ In case of an emergency, response crews need clear access to the meter.



## *Can snow and ice damage gas meters and pipes?*

Meters are designed to withstand winter weather conditions, but heavy or hard-packed snow and ice can cause damage. To avoid problems follow some basic meter protection tips:

- ▶ Keep the meter area and path to the meter clear of snow and ice.
- ▶ Use a broom to keep the snow cleared around and on top of the meter. Do not use a snow blower or shovel near the meter.
- ▶ NEVER kick or hit a meter to break away snow or ice.
- ▶ Remove icicles from overhead eaves and gutters to prevent dripping water on the meter.

**If your meter set appears to have damage, please call Great Plains at 877-267-4764.**

01/2025

# SNOW REMOVAL SAFETY

*Great Plains urges homeowners and contractors to be careful when removing snow and follow these safety steps:*

- ▶ Avoid pad-mounted transformers, meters, regulators and other types of equipment necessary for continuous electric and natural gas service. Damage to energized facilities can be dangerous and even fatal. The loss of services from a single accident can affect hundreds of homes and businesses.
- ▶ Be careful when piling snow beneath electric lines where children might reach them. Just a quick look up is all it takes to make sure it is safe.

**If you are removing snow in Great Plain's service area and you are unsure of the location of energy delivery facilities, call 877-267-4764.**

Snow removal equipment operators should watch for buried objects like natural gas meters and risers.

Snow and ice buildup can cause regulators and meters to malfunction, leading to hazards. A buried regulator may clog, affecting gas supply to appliances. Wet, heavy snow can pressure the meter and strain piping, potentially causing breaks.

**If your meter set appears to have damage, please call Great Plains at 877-267-4764.**



**Know what's below.  
Call before you dig.**



*A Division of Montana-Dakota Utilities Co.*

***In the Community to Serve®***